

Figure 6: Viewshed Analysis
Sheet 1 of 3
Blade Tip Visibility
Cohocton Wind Power Project

Prepared By:



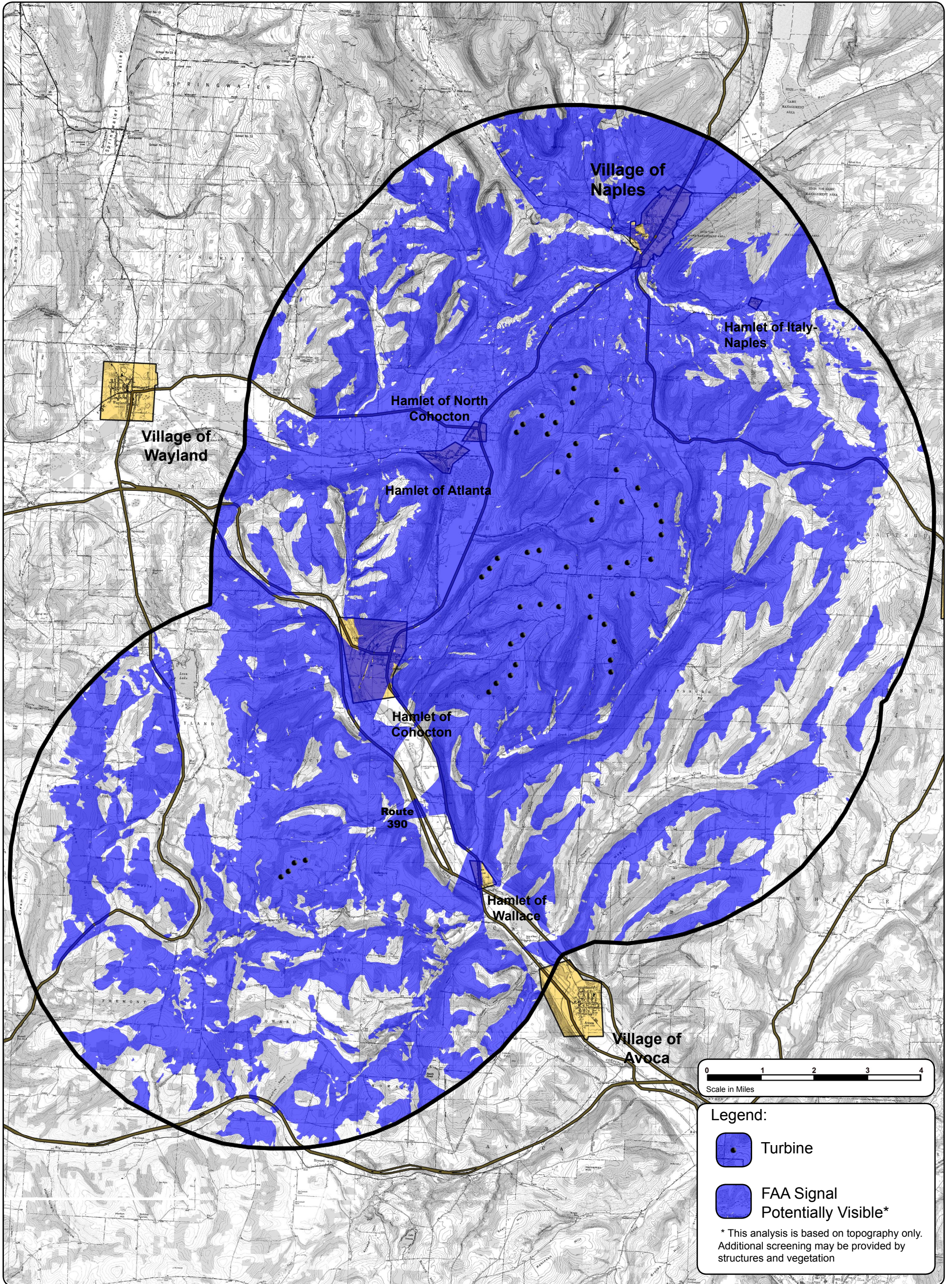
March 2006



NORTH

Base Map: USGS 7.5 Avoca, Haskinville, Naples, Prattsburgh, Rheims, and Wayland, Canisteo, Towlesville, Bath, Hornell, Arkport, Dansville, Conesus, Springwater, Bristol Springs, and Middlesex Quadrangles

Town of Cohocton
 Steuben County, New York



NORTH

Base Map: USGS 7.5 Avoca, Haskinville, Naples, Prattsburgh, Rheims, and Wayland, Canisteo, Towlesville, Bath, Hornell, Arkport, Dansville, Conesus, Springwater, Bristol Springs, and Middlesex Quadrangles

Figure 6: Viewshed Analysis
Sheet 2 of 3
FAA Light Visibility
Cohocton Wind Power Project

Town of Cohocton
 Steuben County, New York

Prepared By:



FEEL THE WIND. THINK CLEAN.™

March 2006

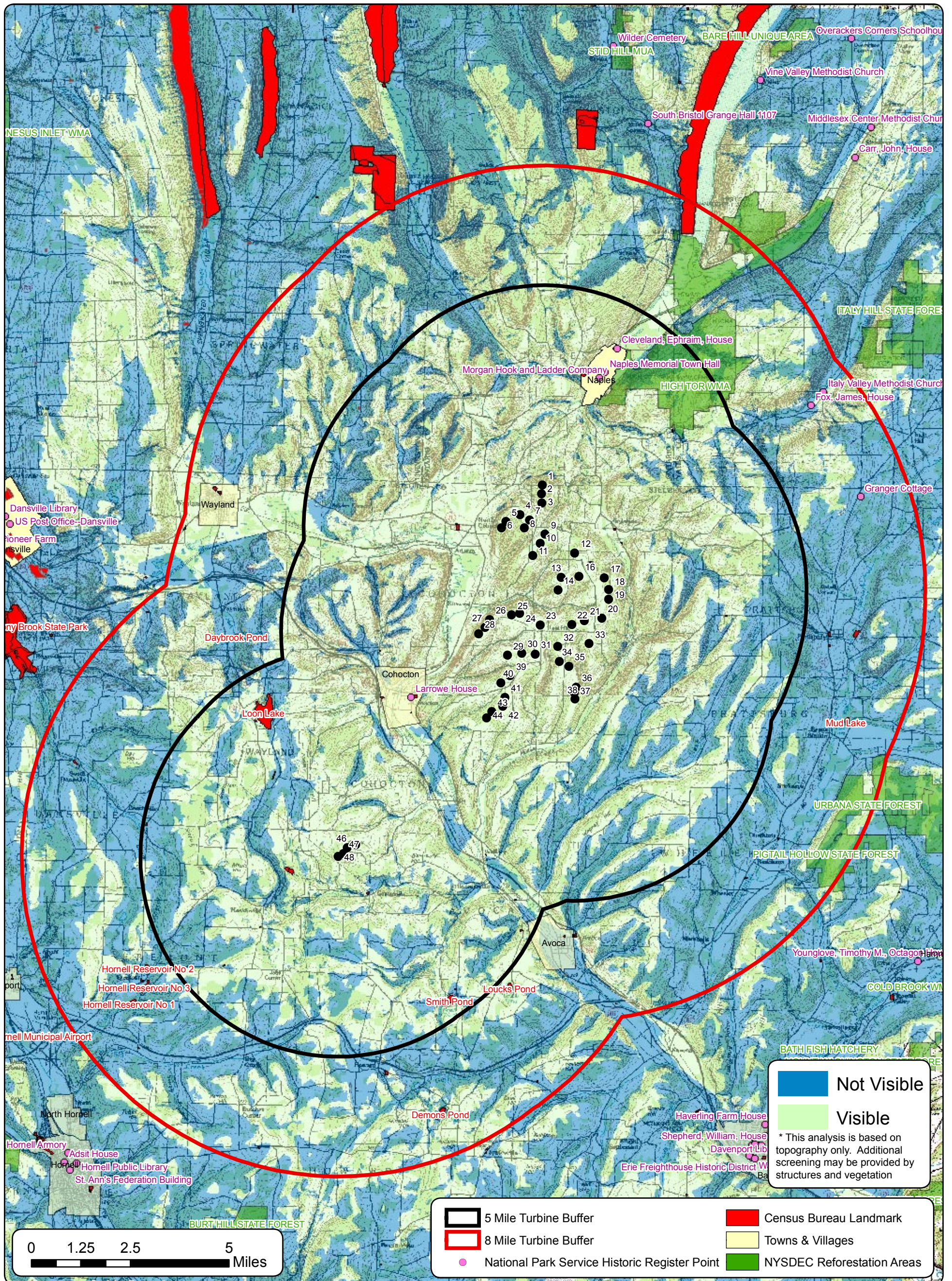


Figure 6: Viewshed Analysis
Sheet 3 of 3
8 Mile Radius

Cohocton Wind Power Project

Town of Cohocton
 Steuben County, New York

Prepared By:



FEEL THE WIND. THINK CLEAN.™

March 2006



NORTH

Base Map: USGS 7.5 Avoca, Haskinville, Naples, Prattsburgh, Rheims, and Wayland, Canisteo, Towlesville, Bath, Hornell, Arkport, Dansville, Conesus, Springwater, Bristol Springs, and Middlesex Quadrangles